



THE FASTEST, EASIEST IMAGE CAPTURE PROCESS FOR PHOTO IDS

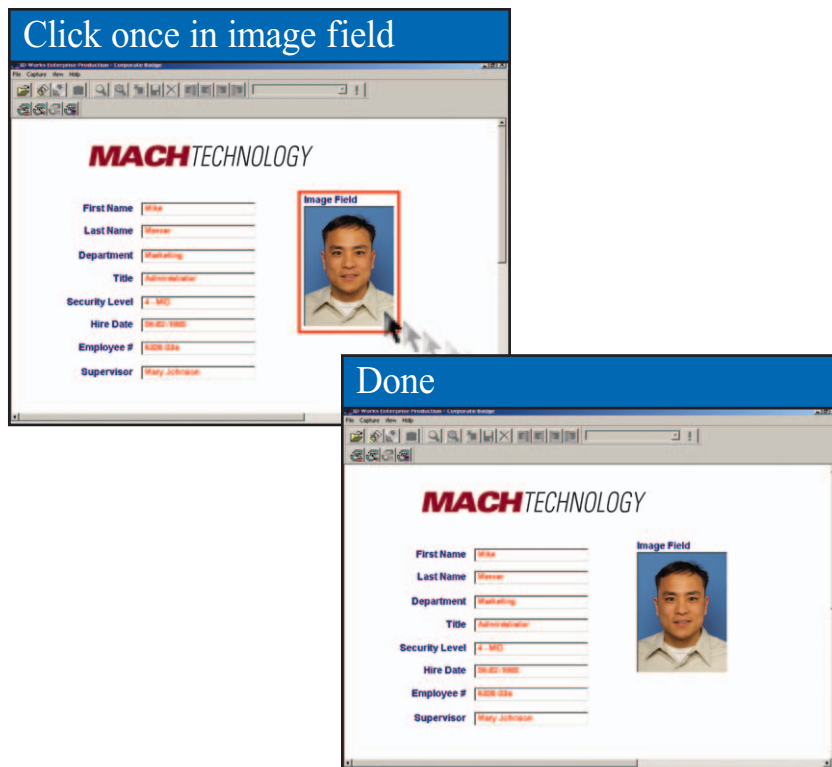
Datacard Tru photo solutions offer exceptional automated simplicity and deliver brilliant, true-to-life quality for full-color captured images.



Datacard® Tru™ photo solutions use a software-driven design that lets you capture the exact image you want without ever touching the camera. This fast, easy approach adds speed and productivity to any photo ID process.

- **Quick, one-click operation.** Tru photo solutions incorporate auto-capture and auto-crop features to produce high-quality digital images in less than seven seconds, with a single click of the mouse. No panning, tilting or zooming is required. Manual options are also available for additional flexibility.
- **Fully integrated photo ID system.** Tru photo solutions offer easy, seamless compatibility with any product in the Datacard® ID Works® and ViaNet® identification software families. It makes a powerful addition to any integrated Datacard ID system.
- **Two solutions to meet your needs and budget.** The standard Datacard Tru photo solution comes with Tru photo software, a 3.2 megapixel digital camera and image capture accessories. For the most advanced digital image capture technology, the Datacard Tru photo professional solution features Tru photo software, a 7.1 megapixel digital camera, image capture accessories and an optional high-powered external flash.

With Datacard Tru photo software, a single click of the mouse captures the image, crops it to your pre-set specifications and makes it ready to print—all in less than seven seconds.



DATACARD®
TRU™ PHOTO SOLUTION

CUSTOMER CONFIGURABLE CAPTURE SETTINGS

Auto capture

Operator clicks once in the image field and photo is immediately captured

Manual capture/live video

Provides live video for the operator to confirm positioning and facial expression

Auto crop

Image is automatically cropped to pre-defined ratio without operator intervention

Manual crop

The captured image can be resized by the operator by moving and sizing the boundaries of the cropping frame

White balance

Settings can be selected to capture the most realistic colors for your lighting environment

Red-eye reduction

When selected, the camera triggers a red-eye reduction lamp to eliminate the possibility of red-eye

TRU PHOTO SOLUTION

Components

Datacard Tru Photo Software with USB security key
3.2 megapixel digital camera
Standard 4-ft. USB cable and 10-ft. USB extension cable
AC power adapter
Country-specific power cord
Tripod, backdrop, stand and frame
Installation instructions

Specifications

Physical dimensions (w x h x d)

4.21 in. x 2.10 in. x 1.45 in.
(107 mm x 53.4 mm x 36.8 mm)
Excluding protrusion

Weight

5.83 oz./165g (camera body only)

Operating environment

Humidity: 10%-90%
Temperature: 32°-104° F (0°-40° C)

Optical zoom 3x

Flash range

Subject should be 2 to 6 feet
(.6 to 1.8 meters) from camera

Memory

SanDisk® SD™ memory card
(SDC-16M)

Agency approvals

CE Mark certified, FCC Class B, UL

TRU PHOTO PROFESSIONAL SOLUTION

Components

Datacard Tru Photo Software with USB security key
7.1 megapixel digital camera
Standard 4-ft. USB cable and 10-ft. USB extension cable
AC power adapter
Country-specific power cord
Tripod, backdrop, stand and frame
Installation instructions
Optional external flash components (120V/240V):
Flash
Bracket
Syncro cord and hot shoe adapter
Country-specific power cord

Specifications

Physical dimensions (w x h x d)

4.1 in. x 2.9 in. x 2.9 in.
(104.9 mm x 72.8 mm x 73.1 mm)
Excluding protrusion

Weight

13.4 oz./380g (camera body only)

Operating environment

Humidity: 10%-90%
Temperature: 32°-104° F (0°-40° C)

Optical zoom 4x

Flash range

Subject should be 2 to 6 feet
(.6 to 1.8 meters) from camera

Memory

SanDisk® CompactFlash® card
(FC-32M)

Agency approvals

CE Mark certified, FCC Class B, UL

Optional external flash specifications (120V/240V)

Adjustable for full, half and quarter power
Three second recycle time
Flash life 50,000 flashes minimum at full power
Recommended work distance of 6 to 15 feet (1.8 to 4.5 meters) depending on the environment

DatacardGroup

11111 Bren Road West

Minnetonka, MN 55343-9015

+1 952 933 1223

+1 952 931 0418 FAX

www.datacard.com

Datacard, Tru, ID Works and ViaNet are registered trademarks, trademarks, or service marks of DataCard Corporation in the United States and/or other countries. SanDisk, SD and CompactFlash are trademarks and registered trademarks of SanDisk Corporation.

Names and logos on sample cards are fictitious. Any similarity to actual names, trademarks or tradenames is coincidental.

© 2004-2005 DataCard Corporation.
All rights reserved.

DC5-7003