

PROXIMITY: Simple, Secure.

PROXIMITY access control from Paxton Access.



Regain control of your building with PROXIMITY access control

- PROXIMITY Access control gives you control over who has access to your building.
- Keys also do this - so what is the difference?
- When you lose a key, you have the expense and inconvenience of replacing locks and all the other keys, or you accept that your building is no longer secure.
- PROXIMITY gives easy, convenient access for those who have a right to enter the building.
- PROXIMITY is maintenance free.
- PROXIMITY is a user friendly, reliable and convenient way to unlock a door. No more searching for keys or locks getting jammed.

Want to know more? Turn over for more information.

PROXIMITY: Simple, Secure.

4 Simple steps to control:

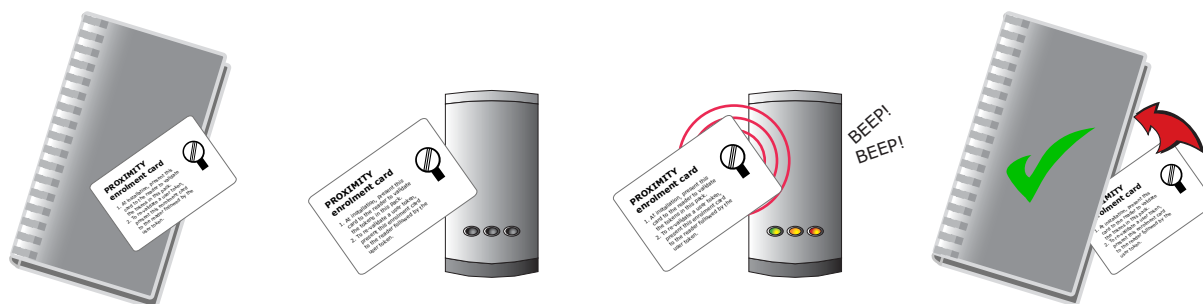
- 1** A PROXIMITY reader is installed.
- 2** A card pack is ordered to accompany the reader.
- 3** The installer presents the enrolment card to the reader.
- 4** All cards in the card pack are immediately valid for use.

Notes

The enrolment card is found in the card pack.

The card pack is unique to your building and contains either ten, twenty five, fifty or one hundred user cards.

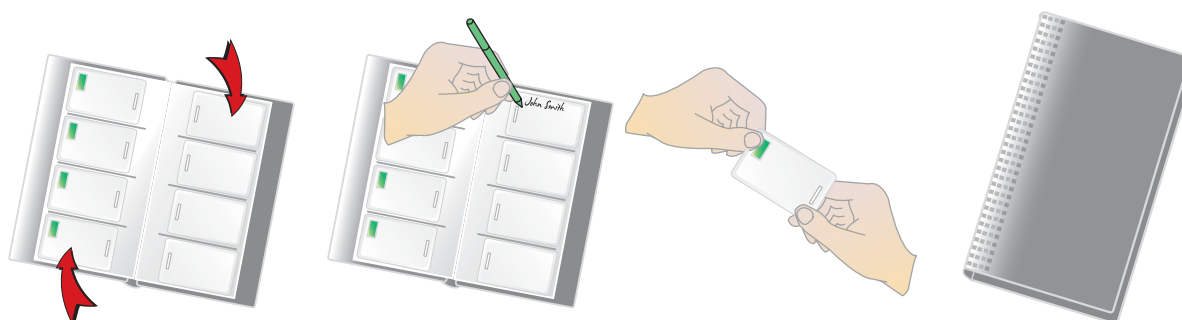
Enrolling a card pack



All you have to do is issue the cards.

- The card pack contains user cards and shadow cards.
- The user cards are in pockets on the left-hand side of the wallet.
- The shadow cards are in pockets on the right-hand side of the wallet.
- Simply supply a user card to each member of staff.
- Record their names on the corresponding shadow cards.
- The shadow card pockets have a cut-out window to make writing on the shadow card easy.

Issuing user cards



PROXIMITY: Simple, Secure.

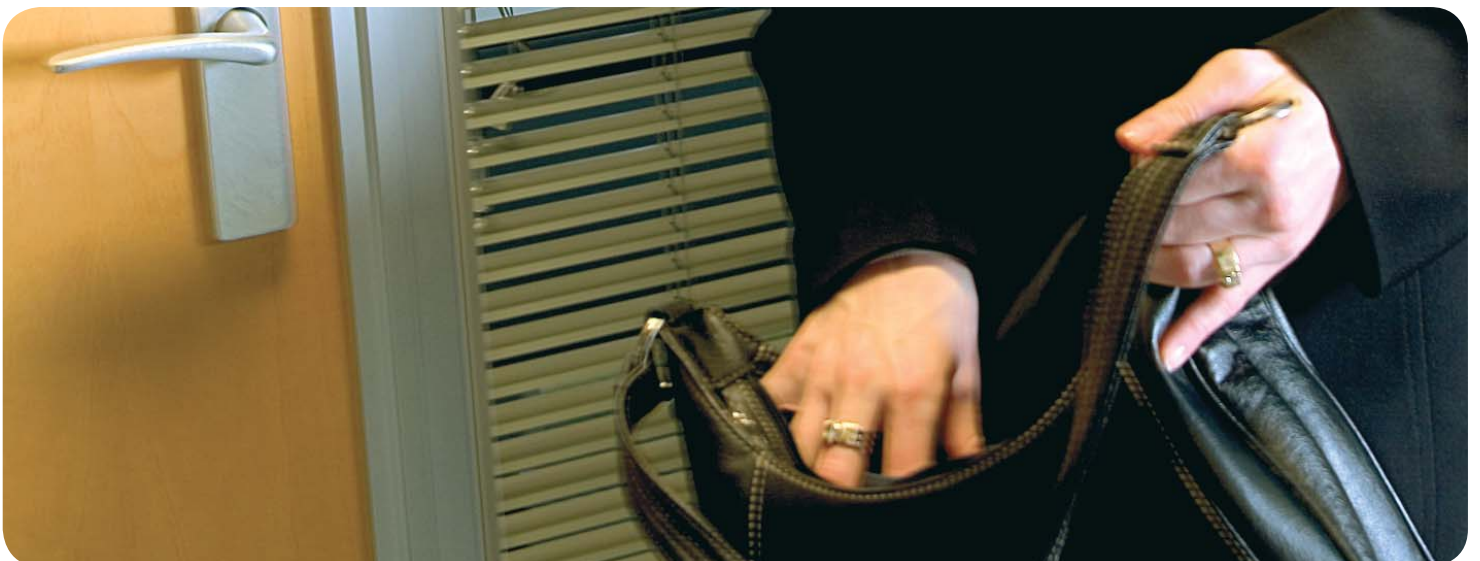
Gaining access

- The user presents their card to the reader and the door unlocks.
- Cards or keyfobs are easy to carry in a wallet or on a keyring.
- Cards and keyfobs have no batteries.
- Convenience and ease of access are assured.



Lost Card!

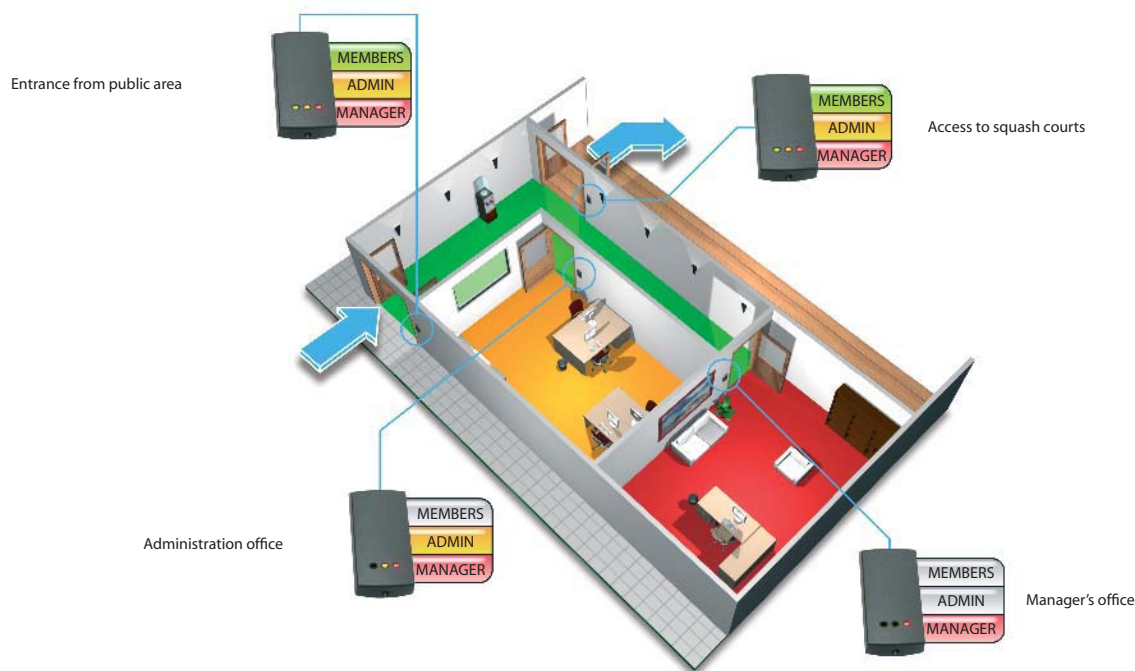
- Open the card wallet and remove the shadow card with that person's name.
- Go to the reader and present the shadow card.
- The lost user card is now barred.
- If found, the lost user card will no longer allow access.



PROXIMITY: Simple, Secure.

Restricting access by token colour

PROXIMITY systems can be used to control access through several doors in a building. Access can be restricted to certain areas based on the colour of a user's token. A function card pack is required.



- The example above shows a squash club with 4 doors controlled by PROXIMITY.
- Green tokens are issued to club members.
- Amber tokens are issued to Administration Staff.
- Red tokens are issued to Management Staff.
- Members are permitted access only through the main entrance and into the squash courts.
- Administration Staff are allowed everywhere other than the Manager's Office.
- Management Staff have unrestricted access.
- The colour 'zoning' system is easy to manage and keeps people where they are meant to be!

I need access control!

Contact your local Paxton Access installer for a quote on a PROXIMITY system from Paxton Access.

Contact:



TransTech Systems, Inc.
Toll Free: 1-888-VIDEO-ID
Phone: 503-682-3292
Fax: 503-682-0166
Wilsonville, OR 97070
www.ttsys.com