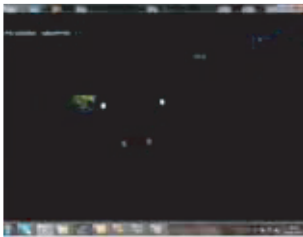


Feature Guide for Series II & III iMEGAPRO

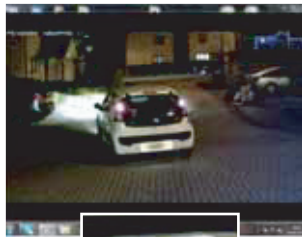
Sense Up Plus:

Manufacturers have traditionally utilised frame integration technology to improve the low light performance in CCTV cameras. Whilst effective at producing a low light image, 'motion blur' is a common problem in areas with movement. Sense Up Plus utilises intelligent image signal processing with a highly sensitive CMOS sensor, AGC control and 3D noise reduction provide the ultimate low light image without any 'motion blur' or noise.

Colour



Colour Sense Up Plus



HD clarity

Quadruple Streaming:

Within the main profile four individual streams are available; two H.264 streams; one at 1080P resolution the other at 480P and two JPEG streams; 480P and CIF resolution respectively. Each can be set up to a maximum 30 FPS. The advantages are that each client can request a stream from the camera to suit its needs. For example the recording device could use the 1080P H.264 stream at 30 FPS, whilst mobile devices might connect to the JPEG CIF stream to save bandwidth and increase transmission speed.

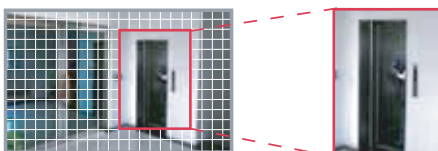
Region of Interest (ROI):

A ROI is a designated area within each camera view. This can then be delivered to the recording device as an individual stream. For example; a shop counter (overall image) is streamed at 2 FPS whilst the ROI is zoomed into the till and streamed at 15 FPS giving faster updates of this sensitive area.

E Tour:

Digitally zoom and move around the camera image. Preset positions can be stored and a tour can then move around those preset positions as though it were a mechanical pan and tilt camera.

Motion Detection



Recording

Face Detection



Detecting

Face

Tampering Detection



Alarm

Alarm

Weighted Mode:

Each stream has the option to be set to weighted mode. When enabled the stream will transmit at 1 FPS regardless of the programmed FPS. Upon an alarm the frame rate will increase to its programmed values. This optimises both hard drive recording space and bandwidth usage but still maintains continuous surveillance recording.

IR Illumination:

Already a leader in infrared integration, our expertise in this field has been applied to create the largest ranges of IR integrated IP cameras. IR LED illumination can be achieved for distances up to 60 metres.

ONVIF:

LILIN were the first company in the world to produce a range of ONVIF compatible products. This enables our range of cameras to work with many Video Management Software solutions including, Milestone, Genetec, Axxon, NUUO and GeoVision to name but a few.

Alarms can be activated using a number of modes:

Motion Detection:

Detects motion within a selected zone

Face Detection:

Detects a human face within a selected zone

Tamper Detection:

Detects changes in the camera image, such as spray painting, focus drift or the camera field of view moving

Audio Detection:

Activates an alarm if sound is detected (audio models only)

Other Features:

Privacy Masking:

8 privacy zones to block out parts of the video, ideal for applications such as chip and pin terminals

Power over Ethernet (PoE):

Enabling one cable solution for both power and video/data

Graphic User Interface (GUI):

iMEGAPRO II & III use the same user interface as LILIN's 720P and 1.3 megapixel IP camera range. This familiar and user friendly interface ensures smooth integration and quick configuration



IPD2220ES

Network Products
MEGAPRO

1080P HD Dome IP Camera



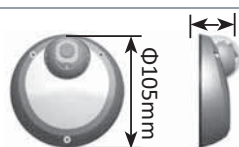
Features

- Full HD 2 megapixel CMOS image sensor
- True H.264 AVC/MPEG-4 part 10 real-time video compression
- H.264 and Motion JPEG multi-profile video streaming
- 3D noise reduction (MCTF)
- 2D WDR function
- Digital PTZ supported
- Face / Tampering / Audio / Motion detection alarm function
- Built-in highly sensitive microphone
- One-way audio supported
- Onvif supported
- Support Sense Up Plus and Quadruple Streaming technologies



Dimensions

Φ 105 x 39mm



(Unit:mm)

IP CAMERA SERIES			
1080P HD Dome IP Camera			
Model		IPD2220ES4.3	IPD2220ES6
Lens	Focal Length	4.3 mm	6 mm
	Iris	F1.6	F1.8
	Angle of View	70°(H), 51°(V), 89°(D)	49.3°(H), 35.9°(V), 64.5°(D)
Pick Up Element		1/2.7" CMOS image sensor	
Effective Pixels		1920 (H) x 1080 (V) = 2,073,600 (pixel)	
Chip Size		5.856mm (H) x 3.276mm (V)	
Scanning System		Progressive Scan	
Min. Illumination		0.6 Lux at F1.6	0.8 Lux at F1.8
White Balance		Auto / Tungsten / Indoor / Fluorescents1 / Fluorescents2 / Outdoor1 / Outdoor2	
Back Light Compensation		Off / On	
Electronic Shutter		1/30(25)s ~ 1/8000s	
Sense Up		Off / 1 Frame / 2 Frames / 3 Frames / 7 Frames	
Sense Up Plus		Yes	
Auto Gain Control		36 dB Variable Gain	
3D Noise Reduction		Off / 1 ~ 32 Selectable	
2D WDR		Off / On	
Privacy Masking		Off / On (4 zones)	
Image Effects		Brightness, Contrast, Hue, Saturation, Sharpness, Mirror, Flip	
Operating Temperature		-25°C ~ +50°C (-13°F ~ 122°F)	
Dimension		Φ105 x 39mm	
Weight		250g	
Power Supply		PoE (IEEE 802.3af compliant)	
Power Consumption		5W	

NETWORK	
Video Compression	H.264 , Motion JPEG
Resolution	1080P(1920 x 1080), 720P(1280 x 720), D1(720 x 480), CIF(352 x 240)
Multiple profile	Profile #1 H.264 1920x1080 @30fps, H.264 720x480 @30fps, JPEG 720x480 @25fps, JPEG 352x240 @25fps
	Profile #2 H.264 1280x720 @30fps, H.264 720x480 @30fps, JPEG 352x240 @25fps
	Profile #3 H.264 1920x1080 @30fps, H.264 720x480 30fps, JPEG 1280x720 @25fps
	Profile #4 H.264 1920x1080 @30fps, H.264 720x480 30fps, JPEG 720x480 @25fps
Video Streaming	RTP/HTTP, RTP/TCP, RTP/UDP
Video Bitrate	128Kbps ~ 5Mbps
	Frame rate and bit rate controllable on-the-fly
Security	VBR / CBR / GOP supported
	Base64 HTTP encryption
	Multiple user access levels with password protection
Users	10 user accounts available
ePTZ & Digital Zoom	8 simultaneous users
OSD	Yes, ROI is supported
Alarm Function	Text overlay for date, time, and camera name
	Alarm / motion / tampering / face detection triggering recording into SD card
CPU, Memory	Image upload over FTP and E-mail by face / tampering / audio / motion detection
	Embedded SoC ARM11, 528MHz, 256MB DDR2, 256MB flash memory
Maintenance	Firmware update via HTTP
Network Interface	Firmware available at web site
PC Requirement	10Mbps / 100Mbps Base-T, RJ-45
	OS : Windows 2000, Windows XP, Windows Vista, Windows 7
	Browser : Windows Internet Explorer 6, 7, 8
Network Protocols	CPU : Intel Pentium 4 1.8GHz or above
	RAM : 1GB or above, Independent Display Card
Mobile Phone and PDA	IP, TCP, UDP, HTTP, SMTP, NTP, DDNS, UPnP, FTP, ARP, DHCP, PPPoE, DNS, RTSP, RTCP, Telnet, Onvif
System Integration	iPhone, iPad, and Android support
CMX	Onvif & LILIN HTTP API
Video Display	Support CMX HD 3.6
OS	LILIN Universal ActiveX & LILIN Java Applet
One-way Audio	Embedded Linux 2.6.32
SD Card Recording	G.711
	Support Micro SD/SDHC card for circular recording (card is not included)



TransTech Systems
12142 NE Sky Lane, Suite 130
Aurora, OR 97002
TEL: (888) 843 - 3643
FAX: (503) 682 - 0166
EMAIL: sales@ttsys.com
WEBSITE: www.ttsys.com