

# Identification & Access Control



Print all your IDs on demand



## Uses:

- Employee Badges
- Visitor IDs
- School & Student IDs
- Event IDs
- Access Control Badges

## Did you know:

- You can add high-quality photos, text and barcodes to all your badges.
- You can store personal data on your ID cards.

## References:

- PGA Tournament, Honda Classic, *Florida*
- HES Convention Group, *Florida*
- Cartier, *Switzerland*
- Nestlé, *Switzerland*
- The International Cannes Film Festival, *France*



# OUR SOLUTIONS

## Evolis Tattoo<sup>2</sup>

### Color single-sided card printer



- 2-year manufacturer warranty
- Magnetic or contactless encoding options
- **Printing Speed:**  
Color (YMCKO): 40 seconds per card  
Monochrome: 7 seconds per card

\* cost per print: *\$.45 color YMCKO / \$.023 monochrome*

## Evolis Pebble<sup>4</sup>

### Color single-sided card printer



- 3-year manufacturer warranty
- Magnetic, smart contact or contactless encoding options
- **Printing Speed:**  
Color (YMCKO): 150 cards per hr  
Monochrome: up to 1,000 cards per hr

\* cost per print: *\$.325 color YMCKO / \$.014 monochrome*

## Evolis Dualys<sup>3</sup>

### Color dual-sided card printer

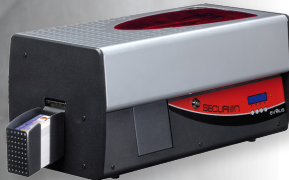


- 3-year manufacturer warranty
- Magnetic, smart contact or contactless encoding options
- **Printing Speed:**  
Color 1 side, Black 1 side (YMCKO-K):  
125 cards per hr  
Monochrome 2 sides: up to 350 cards per hr

\* cost per print: *\$.40 color YMCKO-K / \$.325 color YMCKO / \$.014 monochrome*

## Evolis Securion

### Color dual-sided card printer with lamination



- 2-year manufacturer warranty
- Magnetic, smart contact or contactless encoding options
- **Printing & Laminating Speed:**  
YMCK-K, 1.0 mil patch 1 side: 85 to 105 per hr  
YMCK, 1.0 mil patch 1 side: 95 to 120 per hr

\* cost per card: *\$.40 color YMCKO-K / \$.325 color YMCKO / \$.2125 laminate*



12142 NE Sky Lane, Suite 130 • Aurora, OR 97002  
P: 888.843.3643 • F: 503.682.0166 • email: sales@ttsys.com